

QUESTIONNAIRE NUMBER IN COLUMNS 1-4 CARD 0 IN COLUMN 5 JOB NUMBER 4L-103 IN COLUMNS 6-10

COUNTRY CODE

0	9

 11-12

OUR SURVEY NUMBER

4	1	1

 13-15

INTERVIEW NUMBER

--	--	--	--	--	--	--

 16-21

Q.1. a) Do you know whether your name appears in the Electoral Register for Northern Ireland (the register of people entitled to vote at the next General Election), under your present address, at another address or does it not appear at all? If don't know/does not appear at all, ask: Is this because you are not entitled to vote in Northern Ireland, or for some other reasons?

- 22
- | | | |
|--------------------------------|---|-----------|
| At present address | 1 | GO TO Q.2 |
| At another address | 2 | GO TO Q.2 |
| Don't know if registered | 3 | GO TO Q.2 |
| Does not appear at all | 4 | GO TO Q.2 |

IF NOT FROM NORTHERN IRELAND, ASK:

1. b) What is your nationality ? Please tell me the country
(or countries) that apply (MULTIPLE ANSWERS POSSIBLE)
- | | | |
|-------------------------------------------------------|----|--------------------------------------------|
| Belgium..... | 23 | 1, |
| Denmark..... | | 2, |
| Germany..... | | 3, |
| Greece..... | | 4, |
| Spain..... | | 5, |
| France..... | | 6, |
| Ireland..... | | 7, |
| Italy..... | | 8, |
| Luxemburg..... | | 9, |
| Netherlands..... | | 0, |
| Portugal..... | | X, |
| United Kingdom (Great Britain, Northern Ireland)..... | | Y, |
| Other countries..... | 24 | 1, CLOSE INTERVIEW &
Recruit Substitute |
| DK..... | | 2, CLOSE INTERVIEW &
Recruit Substitute |
1. c) (IF CODES 1 TO Y AT Q.1.b)
Were you on the register to vote for the European election of Thursday, 9th June in Northern Ireland?
- | | | |
|----------|----|-----------------------------------------------|
| Yes..... | 25 | 1 |
| No..... | | 2 CLOSE INTERVIEW |
| DK..... | | 3 CLOSE INTERVIEW &
Recruit
Substitute. |

ASK ALL

Q.2. I would like to ask you a question about how much trust you have in people from various countries. For each, please tell me whether you have a lot of trust, some trust, not very much trust or no trust at all?

(INT. : SHOW CARD 'Q.2' - READ OUT EACH PEOPLE, INCLUDING YOUR OWN
- ONE ANSWER ON EACH LINE)

READ OUT	Lot of trust	Some trust	Not very much trust	No trust at all	DK
Italians	26 1	2	3	4	5
Germans	27 1	2	3	4	5
British	28 1	2	3	4	5
Irish	29 1	2	3	4	5
Belgians	30 1	2	3	4	5
Luxemburgers	31 1	2	3	4	5
Dutch	32 1	2	3	4	5
Danes	33 1	2	3	4	5
French	34 1	2	3	4	5
Spaniards	35 1	2	3	4	5
Greeks	36 1	2	3	4	5
Portuguese	37 1	2	3	4	5
Americans	38 1	2	3	4	5
Japanese	39 1	2	3	4	5
Russians	40 1	2	3	4	5

Q.3. To what extent would you say you are interested in politics?

(READ OUT)

A great deal.....	41	1
To some extent.....		2
Not much.....		3
Not at all.....		4
DK.....		5

- Q.4. To what extent would you say you are interested in European politics, that is to say matters related to the European Union (European Community) : a great deal, to some extent, not much or not at all ?
- | | | |
|---------------------|----|---|
| A great deal..... | 42 | 1 |
| To some extent..... | | 2 |
| Not much..... | | 3 |
| Not at all..... | | 4 |
| DK..... | | 5 |
- Q.5. In general, are you for or against efforts being made to unify Western Europe ? Are you ... ? (READ OUT)
- | | | |
|-------------------------------|----|---|
| For - very much..... | 43 | 1 |
| For - to some extent..... | | 2 |
| Against - to some extent..... | | 3 |
| Against - very much..... | | 4 |
| DK..... | | 5 |
- Q.6. Generally speaking, do you think that Northern Ireland's membership of the European Union (European Community) is ... ? (READ OUT)
- | | | |
|---------------------------|----|---|
| A good thing..... | 44 | 1 |
| A bad thing..... | | 2 |
| Neither good nor bad..... | | 3 |
| DK..... | | 4 |
- Q.7. Taking everything into consideration, would you say that Northern Ireland has on balance benefited or not, from being a member of the European Union (European Community) ?
- | | | |
|--------------------|----|---|
| Benefited..... | 45 | 1 |
| Not benefited..... | | 2 |
| DK..... | | 3 |
- Q.8. Taking everything into consideration would you say that, in five years time, Northern Ireland will be on balance benefiting or not from being a member of the European Union (European Community) ?
- | | | |
|--------------------------|----|---|
| Will be benefiting..... | 46 | 1 |
| Won't be benefiting..... | | 2 |
| DK..... | | 3 |
- Q.9. If you were told tomorrow that the European Union (European Community) had been scrapped, would you be very sorry about it, indifferent or very relieved ?
- | | | |
|--------------------|----|---|
| Very sorry..... | 47 | 1 |
| Indifferent..... | | 2 |
| Very relieved..... | | 3 |
| DK..... | | 4 |
- Q.10. On the whole, are you very satisfied, fairly satisfied, not very satisfied or not at all satisfied with the way democracy works in Northern Ireland ? Would you say you are...? (READ OUT)
- | | | |
|---------------------------|----|---|
| Very satisfied..... | 48 | 1 |
| Fairly satisfied..... | | 2 |
| Not very satisfied..... | | 3 |
| Not at all satisfied..... | | 4 |
| DK..... | | 5 |

Q.11. And what about the way democracy works in the European Union (European Community) ? Would you say you are ...? (READ OUT)

Very satisfied.....	49	1
Fairly satisfied.....		2
Not very satisfied.....		3
Not at all satisfied.....		4
DK.....		5

Q.12. There has been a lot of discussion recently about the European Union (European Community). Some people say that too many issues are decided on by the European Union (European Community), others say that more issues should be decided on by the European Union (European Community). Which of the following statements comes closest to your view? (SHOW CARD 'Q.12')

- | | | | |
|-----------------------------------------------------------------------------------------------------------------------------------------------------|----|---|------------|
| Too many issues are decided on by the European Union (European Community)..... | 50 | 1 | GO TO Q.13 |
| The number of issues decided on by the European Union (European Community) at present is about right..... | | 2 | GO TO Q.13 |
| More issues should be decided on by the European Union (European Community)..... | | 3 | GO TO Q.13 |
| On some issues there should be more European Union (European Community) decision-making and on other issues there should be less (SPONTANEOUS)..... | | 4 | GO TO Q.13 |
| I have not really thought about it..... | | 5 | GO TO Q.14 |
| DK..... | | 6 | GO TO Q.14 |

Q.13. When you say (INSERT RESPONSE TO QUESTION 12), is this a general feeling that you have about the European Union (European Community), or have you specific issues in mind ?

General feeling.....	51	1
Specific issues.....		2
THE RESPONDENT DID NOT SPECIFY.....		3

What sort of specific issues ?

(PROBE) Which other issues? (PROBE UNTIL THE RESPONDENT SAYS NONE)

ASK ALL

Q.14. There was an European election on Thursday, 9th June 1994. For one reason or another, many people in Northern Ireland did not vote in that election. Could you please think back to Thursday, 9th June 1994, did you yourself vote in the European election ?

Voted.....	52	1	GO TO Q.15
Did not vote.....		2	GO TO Q.19
Can't remember/refused.....		3	GO TO Q.20

ASK QUESTIONS Q.15 TO Q.18 IF CODE 1 AT Q.14 = IF VOTED

Q.15. Which party did you vote for at this European election ?
(SHOW CARD 'Q.15') (PARTY LIST : EUROPEAN VOTE RECALL)

Natural Law Party.....	53	1
Conservative.....		2
Peace Coalition.....		3
Alliance.....		4
Labour.....		5
SDLP.....		6
Independence for Ulster.....		7
Workers Party.....		8
Sinn Fein.....		9
Constitutional Independent - Northern Ireland.....		0
Ulster Unionist.....		X
DUP.....		Y
Ulster Independence Movement.....	54	1
Other party.....		2
Spoiled your vote/voted blank.....		3
Do not remember.....		4
No answer/refusal.....		5

Q.16. Did you give your first preference to a male or to a female candidate?

- I did not have a choice - all candidates were of the same sex (SPONTANEOUS)..... 55 1 GO TO Q.18
- Male candidate..... 2 GO TO Q.17
- Female candidate..... 3 GO TO Q.17
- Don't remember (SPONTANEOUS)..... 4 GO TO Q.18
- DK..... 5 GO TO Q.18

Q.17. (IF VOTED FOR EITHER MALE OR FEMALE : CODES 2 OR 3 AT Q.16)
How important was the sex of the candidate (IF NECESSARY ADD :
"or candidates"), for whom you expressed a preference ? (READ OUT)

- Very important..... 56 1
- Important..... 2
- Not very important..... 3
- Not at all important..... 4
- DK..... 5

ASK ALL VOTED - CODE 1 AT Q.14

Q.18. How important for your choice was the number of female candidates put forward by the party for which you voted ? (READ OUT)

- Very important..... 57 1
- Important..... 2
- Not very important..... 3
- Not at all important..... 4
- NO FEMALE CANDIDATES (SPONTANEOUS)..... 5
- DK..... 6

IF DID NOT VOTE: CODE 2 IN Q.14

Q.19. What was the main reason why you did NOT vote in that election ?

(PROBE) Which other reasons? (PROBE UNTIL THE RESPONDENT SAYS NONE)

OK ALL

20. Let us now look at some public figures.
Using this card, could you give me the name and letter of the individual who holds each of the jobs that I will read out ?
(SHOW CARD 'Q.20')

READ OUT	Correct	Incorrect	DK
B= President of the European Commission	58 1	2	3
D= European Commissioner appointed by the government	59 1	2	3
F= Minister of Finance	60 1	2	3
H= Minister of Foreign Affairs	61 1	2	3

21. Here is a question about the British Prime Minister, JOHN MAJOR. Would you say you quite like him, or you don't particularly like him?

Quite like him..... 62 1
Don't particularly like him..... 2
DK..... 3

22. And the Spanish Prime Minister FELIPE GONZALES ...?

Quite like him..... 63 1
Don't particularly like him..... 2
DK..... 3

23. And about the French President, FRANCOIS MITTERRAND ...?

Quite like him..... 64 1
Don't particularly like him..... 2
DK..... 3

24. And about the German Chancellor, HELMUT KOHL ...?

Quite like him..... 65 1
Don't particularly like him..... 2
DK..... 3

25. Can you tell me which of the following countries are members of the European Union (European Community)?
(SHOW CARD 'Q.25' - CODE IF YES)

Denmark..... 66 1,
Spain..... 2,
Poland..... 3,
Switzerland..... 4,
Ireland..... 5,
Austria..... 6,
France..... 7,
Turkey..... 8,
Portugal..... 9,
Hungary..... 0,
Germany..... X,
Norway..... Y,
None of these (SPONTANEOUS)..... 67 1,
DK..... 2,

26. In your opinion, how is the European Union, European Unification advancing nowadays ? Please look at these people (SHOW CARD 'Q.26') N°1 is standing still, N° 7 is running as fast as possible. Choose the one which best corresponds with your opinion of the European Union, European Unification.

1..... 68 1
2..... 2
3..... 3
4..... 4
5..... 5
6..... 6
7..... 7
DK..... 8

27. And which corresponds best to what you would like ?
(SHOW CARD 'Q.26' AGAIN)

1..... 69 1
2..... 2
3..... 3
4..... 4
5..... 5
6..... 6
7..... 7
DK..... 8

Q.28. Are you for or against the formation, for the European Union, of a European government responsible to the European Parliament ?

For.....	70	1
Against.....		2
DK.....		3

Q.29. Several bodies, institutions or organisations in Northern Ireland are supposed to deal with questions relating to the European Union (European Community). Do you think that these questions would be better dealt with or not, if there were more women in decision-making positions in these bodies, institutions or organisations ?

Yes.....	71	1	GO TO Q.30
No.....		2	GO TO Q.31
DK.....		3	GO TO Q.31

Q.30. (IF YES : CODE 1 AT Q.29)
In which of the following bodies, institutions or organisations ? (SHOW CARD 'Q.30')

The media.....	72	1,
Political parties.....		2,
Churches.....		3,
Companies.....		4,
Education.....		5,
Government.....		6,
Trade unions.....		7,
Regions.....		8,
Local authorities (council, townhall).....		9,
Institutions of the European Union (European Community).....		0,
DK.....		X,

ASK ALL

Q.31. As well as thinking of themselves as from Northern Ireland or whatever, some people think of themselves ALSO as European. Others do not do so.
How about you ? (SHOW CARD 'Q.31')
Please choose between the two ends of the scale. If you fully agree with the opinion on the left hand side, you give a score of 1.
If you fully agree with the opinion on the right hand side, you give a score of 10. The scores in between allow you to say how close to either side you are.

	Not at all also European										Very much also European	DK
	73 1	2	3	4	5	6	7	8	9	10		X

Q.32. How much confidence do you have that decisions made by the European Union (European Community) will be in the interest of Northern Ireland ?
(READ OUT)

A great deal of confidence.....	74	1
A fair amount of confidence.....		2
Not very much of confidence.....		3
No confidence at all.....		4
DK.....		5

Q.33. Many important decisions are made by the European Union (European Community). They might be in the interest of people like yourself, or they might not. To what extent do you feel you can rely on each of the following to make sure that these decisions are in the interest of people like yourself? (SHOW CARD 'Q.33') Please use this scale.
(READ OUT)

- a) First, to what extent do you feel you can rely on the European Commission?
- b) And what about the government?
- c) And what about the European Court of Justice?
- d) And what about the Council of Ministers of the European Union (European Community), representing the national governments?
- e) And what about the House of Commons at Westminster?
- f) And what about the European Parliament?

	Cannot rely on it at all										Can rely on it completely	DK
a) The European Commission	75 1	2	3	4	5	6	7	8	9	10		X
b) The government	76 1	2	3	4	5	6	7	8	9	10		X
c) The European Court of Justice	77 1	2	3	4	5	6	7	8	9	10		X
d) The Council of Ministers of the European Union (European Community) representing the national governments	78 1	2	3	4	5	6	7	8	9	10		X
e) The House of Commons at Westminster	79 1	2	3	4	5	6	7	8	9	10		X
f) The European Parliament	80 1	2	3	4	5	6	7	8	9	10		X

1.34. We are interested in good points and bad points about the European Parliament. First, is there anything in particular that you LIKE about the European Parliament ?

What else ? (PROBE UNTIL THE RESPONDENT SAYS NO)

Q.35. And is there anything in particular that you DISLIKE about the European Parliament ?

What else ? (PROBE UNTIL THE RESPONDENT SAYS NO)

- Q.36. a) As it stands now, how much power do you think the European Parliament has ? Please give me your opinion using this scale, on which 1 indicates no power at all and 10 indicates a great deal of power. (SHOW CARD 'Q.36')
- b) And what about the House of Commons at Westminster?

QUESTIONNAIRE NUMBER IN COLUMNS 1-4
CARD 1 IN COLUMN 5
JOB NUMBER 4L-103 IN COLUMNS 6-10

	No power at all										A great deal of power	DK
a) The European Parliament	11 1	2	3	4	5	6	7	8	9	10		X
b) The House of Commons at Westminster	12 1	2	3	4	5	6	7	8	9	10		X

- Q.37. a) Thinking about the future, how much effect do you think what the European Parliament does will have on people like yourself ? Please use this scale. (SHOW CARD 'Q.37')
- b) And how about the effect on people like yourself of what the House of Commons does ?

	No effect at all										A very big effect	DK
a) The European Parliament	13 1	2	3	4	5	6	7	8	9	10		X
b) The House of Commons at Westminster	14 1	2	3	4	5	6	7	8	9	10		X

- Q.38. a) Some people think that it would be a very good idea if the European Union (European Community) developed into a United States of Europe. Others think it would be a very bad idea. Where would YOU place YOURSELF on this new scale? (SHOW CARD 'Q.38')
- b) And where would you place the view of the government on this same scale ?

	Very bad idea										Very good idea	DK
a) You, yourself	15 1	2	3	4	5	6	7	8	9	10		X
b) The government	16 1	2	3	4	5	6	7	8	9	10		X

Q.39. At the European election we have just had, the parties and candidates campaigned for votes. Did their campaigns come to your attention in any of the following ways ? (READ OUT IN TURN - CODE IF YES)

- Party workers called to your home to ask for votes..... 17 1,
- Election leaflets put in your letterbox or given to you on the street or in shopping centres etc... 2,
- Advertising on behalf of the candidates or parties..... 3,
- Coverage of the campaign in the newspapers..... 4,
- Coverage of the campaign on TV and radio..... 5,
- Family or friends or acquaintances discussing the European election..... 6,
- None of these (SPONTANEOUS)..... 7,
- DK..... 8,

Q.40. (IF DID NOT VOTE: CODE 2 AT Q.14 - INTERVIEWER PLEASE CHECK BACK)
You did not vote in these European elections. Among the following, what are the two main reasons why you did not vote ?
(SHOW CARD 'Q.40')

- I didn't really know what it was about..... 18 1,
- As the European Parliament has so little power, I didn't think it was worth the effort..... 2,
- The problems talked about the most during the campaign were not the ones people are really interested in..... 3,
- The political parties and candidates spoke too much about national problems and not enough about Europe..... 4,
- You couldn't tell any more who was for or against the unification of Europe..... 5,
- Whatever is done, the European Union (European Community) will never work..... 6,
- The parties did not put forward a sufficiently balanced number of women and men as candidates..... 7,
- As a woman, I didn't feel represented by the candidates put forward..... 8,
- DK..... 9,

41. Would you have liked there to have been more female candidates put forward by political parties in these European elections in Northern Ireland or not ?

Yes..... 19 1
No..... 2
DK..... 3

42. a) In an election, some parties win more seats and some parties win fewer seats. Some people say that it matters very little, other people say that it matters a great deal. Thinking about a European election like the one we have just had, where would you place your own view on this scale? (SHOW CARD 'Q.42')

b) And how about an election for the House of Commons at Westminster?

	It doesn't matter at all										It matters a great deal	DK
a) A European election	20 1	2	3	4	5	6	7	8	9	10		X
b) An election for the House of Commons at Westminster	21 1	2	3	4	5	6	7	8	9	10		X

43. a) Let us now focus on candidates rather than parties. How much do you think it matters WHICH PARTICULAR CANDIDATES win seats in a European election like the one we have just had ? (SHOW CARD 'Q.43')

b) And how about an election for the House of Commons at Westminster?

	It doesn't matter at all										It matters a great deal	DK
a) A European election	22 1	2	3	4	5	6	7	8	9	10		X
b) An election for the House of Commons at Westminster	23 1	2	3	4	5	6	7	8	9	10		X

44. Let us now turn to another topic. Some people think it would be best for Northern Ireland to keep its own currency and make it more independent from the other European currencies. Others think the best thing would be to create a common European currency. What do you think ? Should Northern Ireland keep its pound and make it more independent from the other European currencies, or should we aim at one common European currency ? (SHOW CARD 'Q.44')

	More Independent National currency										New common European currency	DK
a) Where would you place yourself on this scale ?	24 1	2	3	4	5	6	7	8	9	10		X
b) And where would you place the parties from Northern Ireland on this scale ? (READ OUT IN TURN LIMITED PARTY LIST)												
Alliance	25 1	2	3	4	5	6	7	8	9	10		X
Ulster Unionist Party	26 1	2	3	4	5	6	7	8	9	10		X
Democratic Unionist Party	27 1	2	3	4	5	6	7	8	9	10		X
Sinn Fein	28 1	2	3	4	5	6	7	8	9	10		X
SDLP	29 1	2	3	4	5	6	7	8	9	10		X
Labour	30 1	2	3	4	5	6	7	8	9	10		X
Conservatives	31 1	2	3	4	5	6	7	8	9	10		X
Green	32 1	2	3	4	5	6	7	8	9	10		X

45. Another important problem for the European Union (European Community) is unemployment. The President of the European Commission has proposed to raise funds for a massive employment programme in order to fight unemployment. Others argue that the completion of the Single European Market alone will promote economic growth and will be the best remedy for the current problems of unemployment. What is your opinion? Should the European Union (European Community) launch a massive employment programme, or should it rather concentrate on the completion of the Single Market? (SHOW CARD 'Q.45')

	Launch a massive employment programme										Concentrate on completion of Single Market	DK
a) Where would you place yourself on this scale?	33 1	2	3	4	5	6	7	8	9	10		X
b) And where would you place the parties from Northern Ireland on this scale? (READ OUT IN TURN LIMITED PARTY LIST)												
Alliance	34 1	2	3	4	5	6	7	8	9	10		X
Ulster Unionist Party	35 1	2	3	4	5	6	7	8	9	10		X
Democratic Unionist Party	36 1	2	3	4	5	6	7	8	9	10		X
Sinn Fein	37 1	2	3	4	5	6	7	8	9	10		X
SDLP	38 1	2	3	4	5	6	7	8	9	10		X
Labour	39 1	2	3	4	5	6	7	8	9	10		X
Conservatives	40 1	2	3	4	5	6	7	8	9	10		X
Green	41 1	2	3	4	5	6	7	8	9	10		X

46. Still another issue with the European Union (European Community) has to do with national borders. What do you think? Should European Union (European Community) continue to remove national border controls and let people move freely between the countries, or should we re-introduce tighter border controls in order to be better able to effectively fight crime in Northern Ireland? (SHOW CARD 'Q.46')

	Continue to remove nat. borders										Re-introduce tighter border controls	DK
a) Where would you place yourself on this scale?	42 1	2	3	4	5	6	7	8	9	10		X
b) And where would you place the parties from Northern Ireland on this scale? (READ OUT IN TURN LIMITED PARTY LIST)												
Alliance	43 1	2	3	4	5	6	7	8	9	10		X
Ulster Unionist Party	44 1	2	3	4	5	6	7	8	9	10		X
Democratic Unionist Party	45 1	2	3	4	5	6	7	8	9	10		X
Sinn Fein	46 1	2	3	4	5	6	7	8	9	10		X
SDLP	47 1	2	3	4	5	6	7	8	9	10		X
Labour	48 1	2	3	4	5	6	7	8	9	10		X
Conservatives	49 1	2	3	4	5	6	7	8	9	10		X
Green	50 1	2	3	4	5	6	7	8	9	10		X

- Q.47. I would like to hear your views on some political issues and problems. (SHOW CARD 'Q.47')
- Which of the following issues do you consider the most important ?
- Which comes second ? Which third ?

	Most important	Second	Third
a) Keeping taxes low	51 1	52 1	53 1
b) Fighting unemployment	2	2	2
c) Securing stable prices	3	3	3
d) Reforming the health service	4	4	4
e) Furthering the political unification of Western Europe	5	5	5
f) Solving the immigration problems	6	6	6
g) Achieving peace in Northern Ireland	7	7	7
h) Reducing of agricultural surpluses	8	8	8
i) Protecting of the environment	9	9	9
j) Enacting a Bill of Rights	0	0	0
k) Fighting crime	X	X	X
l) DK	Y	Y	Y

- Q.48. a) Which party do you think would be best at ... (MENTION MOST IMPORTANT ISSUE FROM Q.47) ?
- (PARTY LIST : NATIONAL VOTE RECALL - SHOW CARD 'Q.48' - ONE ANSWER ONLY)

Alliance.....	54 1
Ulster Unionist Party.....	2
Democratic Unionist Party.....	3
Other Unionist Party.....	4
Sinn Fein.....	5
SDLP.....	6
The Worker's Party.....	7
Conservative.....	8
Democratic Left.....	9
None.....	0
Refused.....	X
DK.....	Y

- Q.48 b) Do you think that (MENTION MOST IMPORTANT ISSUE FROM Q.47) is mainly dealt with today at the regional, national or European level ?
- c) And do you think it would be most appropriate to deal with (MENTION MOST IMPORTANT ISSUE FROM Q.47) at the regional, national or European level ?

	b) Mainly dealt today	c) Most appropriate
Regional	55 1	56 1
National	2	2
European	3	3
DK	4	4

- Q.49. a) Which party do you think would be best at ... (MENTION SECOND IMPORTANT ISSUE FROM Q.47) ?
(PARTY LIST : NATIONAL VOTE RECALL - SHOW CARD 'Q.49' - ONE ANSWER ONLY)

Alliance.....	57 1
Ulster Unionist Party.....	2
Democratic Unionist Party.....	3
Other Unionist Party.....	4
Sinn Fein.....	5
SDLP	6
The Worker's Party.....	7
Conservative.....	8
Democratic Left.....	9
None.....	0
Refused.....	X
DK.....	Y

- Q.49. b) Do you think that (MENTION SECOND MOST IMPORTANT ISSUE FROM Q.47) is mainly dealt with today at the regional, national or European level?
- c) And do you think it would be most appropriate to deal with (MENTION SECOND MOST IMPORTANT ISSUE FROM Q.47) at the regional, national or European level ?

	b) Mainly dealt today	c) Most appropriate
Regional	58 1	59 1
National	2	2
European	3	3
DK	4	4

- Q.50. a) Which party do you think would be best at ... (MENTION THIRD IMPORTANT ISSUE FROM Q.47) ?
(PARTY LIST : NATIONAL VOTE RECALL - SHOW CARD 'Q.50' - ONE ANSWER ONLY)

Alliance.....	60 1
Ulster Unionist Party.....	2
Democratic Unionist Party.....	3
Other Unionist Party.....	4
Sinn Fein.....	5
SDLP	6
The Worker's Party.....	7
Conservative.....	8
Democratic Left.....	9
None.....	0
Refused.....	X
DK.....	Y

- Q.50 b) Do you think that (MENTION THIRD MOST IMPORTANT ISSUE FROM Q.47) is mainly dealt with today at the regional, national or European level?
- c) And do you think it would be most appropriate to deal with (MENTION THIRD MOST IMPORTANT ISSUE FROM Q.47) at the regional, national or European level?

	b) Mainly dealt today	c) Most appropriate
Regional	61 1	62 1
National	2	2
European	3	3
DK	4	4

- Q.51. The Single European Market exists since January, 1st 1993. Do you think that the Single European Market brings more advantages or more disadvantages for Northern Ireland?

Advantages..... 63 1
 Disadvantages..... 2
 DK..... 3

- Q.52. The European Union (European Community) plans to introduce a common currency, the ECU, by 1999 at the latest. Are you in favour of replacing the pound in our country by the ECU or are you not in favour?

In favour..... 64 1 60 TO Q.54
 Not in favour..... 2 60 TO Q.53
 DK..... 3 60 TO Q.54

- Q.53. (IF CODE 2 AT Q.52 = NOT IN FAVOUR)

And if both the ECU and the pound could be used, as currencies, in our country, would you be in favour of this or would you prefer to retain the pound, as the only currency in our country?

In favour of both, ECU plus pound..... 65 1
 Prefers the pound only..... 2
 DK..... 3

NO QUESTIONS Q.54 AND Q.55

ASK ALL

- Q.56. In your opinion, would a greater number of women within decision-making bodies (including political, administrative, professional, financial or other bodies) have a positive influence or not, on decisions taken in the following areas ...?

READ OUT	Yes	No	DK
a) Equal opportunities for men and women	66 1	2	3
b) Family policy	67 1	2	3
c) The fight against unemployment	68 1	2	3
d) The fight against cancer, AIDS, drugs	69 1	2	3
e) Consumer protection	70 1	2	3
f) Protection of the environment	71 1	2	3
g) Educational policy	72 1	2	3
h) Foreign policy and defence	73 1	2	3
i) The fight against crime	74 1	2	3
j) Industrial policy	75 1	2	3
k) Cooperation with the Third World	76 1	2	3
l) Policies in favour of rural areas	77 1	2	3

- Q.57. Generally speaking, how do you feel about foreigners living in Northern Ireland: are there too many, a lot but not too many, or not many?

Too many..... 78 1
 A lot, but not too many..... 2
 Not many..... 3
 DK..... 4

Q.58. Still thinking of these people, do you think their rights should be ... ? (READ OUT)

Extended.....	79	1
Restricted.....		2
Left as they are.....		3
OK.....		4

Q.59. Do you think immigrants and/or political asylum seekers are a big problem for Northern Ireland, or are they not a big problem ?

Big problem.....	80	1
Not a big problem.....		2
OK.....		3

QUESTIONNAIRE NUMBER IN COLUMNS 1-4

CARD 2 IN COLUMN 5

JOB NUMBER 41-103 IN COLUMNS 6-10

Q.60. Which country of the European Union (European Community), do you think, has the most immigrants and/or political asylum seekers ?

(SHOW CARD 'Q.60' - ONE ANSWER ONLY)

Belgium.....	11	1
Denmark.....		2
Germany.....		3
Greece.....		4
Spain.....		5
France.....		6
Ireland.....		7
Italy.....		8
Luxembourg.....		9
Netherlands.....		0
Portugal.....		X
United Kingdom.....		Y
None of these (SPONTANEOUS).....	12	1
OK.....		2

PUNCHER NOTE :
NO COL 13

Q.61. I'm going to read out some statements. For each, please tell me whether you tend to agree with it or tend to disagree?

READ OUT IN TURN	Tend to agree	Tend to disagree	DK
a) Foreigners' children in a school reduce the standard of education	14 1	2	3
b) Foreigners exploit our social welfare system	15 1	2	3
c) The presence of foreigners in our country increases unemployment	16 1	2	3
d) The presence of foreigners is one of the causes of delinquency and violence	17 1	2	3
e) Having foreigners as neighbours creates problems	18 1	2	3
f) Being married to a foreigner generally ends badly	19 1	2	3

Let us now turn to another topic.

Q.62. If there were problems, which other country of the European Union (European Community) could Northern Ireland rely most on ? (DO NOT READ OUT - ONE ANSWER ONLY)

Belgium.....	20	1
Denmark.....		2
Germany.....		3
Greece.....		4
Spain.....		5
France.....		6
Ireland.....		7
Italy.....		8
Luxembourg.....		9
Netherlands.....		0
Portugal.....		X
United kingdom, Great Britain, England.....		Y
None of these.....	21	1
DK.....		2

Q.63. It is intended that Austria, Finland, Norway and Sweden will join the European Union (European Community). After these countries have joined the European Union (European Community) what do you think will then be more important:

- A. to accept more member countries in addition to these four, OR
B. to make relations closer and closer between the then member countries

A.....	22	1
B.....		2
DK.....		3

Q.64. With regard to resolving conflicts around the world, do you think that Germany should take a greater share of responsibility in the future, or not ?

Yes.....	23	1
No.....		2
DK.....		3

Q.65. What about the European Union (European Community) as a whole, do you think that it should take a greater share of responsibility, with regard to resolving conflicts around the world, or not?

Yes.....	24	1
No.....		2
DK.....		3

Q.66. Do you believe that united Germany could become a danger to peace in Europe, or not ?

Yes, could become a danger.....	25	1
No, not.....		2
DK.....		3

DEMOGRAPHICS

1. In political matters people talk of "the left" and "the right".
How would you place your views on this scale? (SHOW CARD 'D.1' -
DO NOT PROMPT. IF CONTACT HESITATES, ASK TO TRY AGAIN)

	Left										Right
26	1	2	3	4	5	6	7	8	9	10	

PUNCHER NOTE: PUNCH '10' AS '0'

Refusal..... 27 1
DK..... 2

- 1.A. And where about would you place each of the following political
parties of Northern Ireland on this same scale?
(SHOW CARD 'D.1' AGAIN)
(READ OUT IN TURN LIMITED PARTY LIST)

	Left										Right	DK
Alliance	28 1	2	3	4	5	6	7	8	9	10		X
Ulster Unionist Party	29 1	2	3	4	5	6	7	8	9	10		X
Democratic Unionist Party	30 1	2	3	4	5	6	7	8	9	10		X
Sinn Fein	31 1	2	3	4	5	6	7	8	9	10		X
SDLP	32 1	2	3	4	5	6	7	8	9	10		X
Labour	33 1	2	3	4	5	6	7	8	9	10		X
Conservatives	34 1	2	3	4	5	6	7	8	9	10		X
Green	35 1	2	3	4	5	6	7	8	9	10		X

2. Do you consider yourself to be close to any particular party?
a) (If YES) Do you feel yourself to be very close to this party, fairly close
or merely a sympathiser?

Very close..... 36 1 GO TO D.3
Fairly close..... 2 GO TO D.3
Merely a sympathiser..... 3 GO TO D.3
Close to no particular party..... 4 GO TO D.2.b
DK..... 5 GO TO D.2.b

- b) (If CODE 4 OR CODE 5 AT D.2.a)

Do you consider yourself a little closer to one of the political
parties than the others?

Yes..... 37 1 GO TO D.3
No..... 2 GO TO D.3.C
DK..... 3 GO TO D.3.C

.3. (IF CODE 1, 2 OR 3 IN D.2.a OR IF CODE 1 IN D.2.b)				
To which party do you feel closest ? (PARTY LIST : NATIONAL VOTE RECALL)				
Alliance.....	38	1		
Ulster Unionist Party.....		2		
Democratic Unionist Party.....		3		
Other Unionist Party.....		4		
Sinn Fein.....		5		
SDLP.....		6		
The Worker's Party.....		7		
Conservative.....		8		
Democratic Left.....		9		
Other party.....		0		
No answer/DK.....		X		
.3.A. When you were young, was your father close to any party ?				
(IF YES) Was he close to your party, close to another, or not close to any party ?				
Close to my party.....	39	1	GO TO D.3.B	
Not close to my party, but to a similar one (SPONTANEOUS).....		2	GO TO D.3.B	
Close to another party.....		3	GO TO D.3.B	
Not close to any party.....		4	GO TO D.4	
DK.....		5	GO TO D.4	
.3.B. (IF CODE 1, 2 OR 3 IN D.3.A)				
Was he very close to this party, fairly close, or merely a sympathiser ?				
Very close.....	40	1	GO TO D.4	
Fairly close.....		2	GO TO D.4	
Merely a sympathiser.....		3	GO TO D.4	
DK.....		4	GO TO D.4	
.3.C. (IF CODE 2 OR 3 IN D.2.b)				
Was your father close to any party when you were young ?				
(IF YES) Would you say he was very close, fairly close, or merely a sympathiser ?				
Very close.....	41	1		
Fairly close.....		2		
Merely a sympathiser.....		3		
No not close to any party.....		4		
DK.....		5		

ASK ALL

D.4. Now I would like to ask you about general elections for the House of Commons. If there were a "General Election" tomorrow (SAY IF CONTACT UNDER 18 YEARS : and you had a vote), which party WOULD YOU VOTE for ? (PARTY LIST : NATIONAL VOTE INTENTION)

Alliance.....	42	1
Ulster Unionist Party.....		2
Democratic Unionist Party.....		3
Other Unionist Party.....		4
Sinn Fein.....		5
SDLP.....		6
The Worker's Party.....		7
Conservative.....		8
Democratic Left.....		9
Other Party.....		0
Would vote blank/would spoil your vote.....		X
Would not vote.....		Y
DK.....	43	1
No answer.....		2

D.5.A. The last general election took place in April 1992. For one reason or another, many people in Northern Ireland did not vote in that election. Could you please think back to that last election, the one in April 1992. Did you vote in that election or not ?

Voted.....	44	1	GO TO D.5
Did not vote.....		2	GO TO D.5.B
Can't remember/refused.....		3	GO TO D.5.B

D.5. Which party DID YOU VOTE for at the last "General Election" of April 1992 ? (PARTY LIST : NATIONAL VOTE RECALL)

Alliance.....	45	1
Ulster Unionist Party.....		2
Democratic Unionist Party.....		3
Other Unionist Party.....		4
Sinn Fein.....		5
SDLP.....		6
The Worker's Party.....		7
Conservative.....		8
Democratic Left.....		9
Other Party.....		0
Did vote blank/spoiled your vote.....		X
Don't remember.....		Y
No answer.....	46	1

5.B. We have a number of parties in Northern Ireland, each of which would like to get your vote. Please tell me for each of the following how probable it is that you will EVER vote for this party ?
(SHOW CARD 'D.5b' - READ OUT LIMITED PARTY LIST)

	Not at all probable										Very probable	DK
Alliance	47	1	2	3	4	5	6	7	8	9	10	X
Ulster Unionist Party	48	1	2	3	4	5	6	7	8	9	10	X
Democratic Unionist Party	49	1	2	3	4	5	6	7	8	9	10	X
Sinn Fein	50	1	2	3	4	5	6	7	8	9	10	X
SDLP	51	1	2	3	4	5	6	7	8	9	10	X
Labour	52	1	2	3	4	5	6	7	8	9	10	X
Conservative	53	1	2	3	4	5	6	7	8	9	10	X
Green	54	1	2	3	4	5	6	7	8	9	10	X

6. a) Are you yourself a member of a trade union ?
b) And is anyone else in your household a member of a trade union ?

		Yes	No	DK
Respondent	55	1	2	3
Anyone else in household	56	1	2	3

- D.7. Are you ... ?
- | | | |
|------------------------|----|---|
| Single..... | 57 | 1 |
| Married..... | | 2 |
| Living as married..... | | 3 |
| Divorced..... | | 4 |
| Separated..... | | 5 |
| Widowed..... | | 6 |

- D.8. How old were you when you stopped full-time education ?
(IF STILL STUDYING : CODE 00 - GO TO D.10)

		58-59
--	--	-------

NO QUESTION D.9

- D.10. SEX
- | | | |
|-------------|----|---|
| Male..... | 60 | 1 |
| Female..... | | 2 |

- D.11. How old are you ?

		61-62
--	--	-------

- D.12. How many people live in your household, including yourself, all adults and children ?
- | | | |
|-----------------|----|---|
| one..... | 63 | 1 |
| 2..... | | 2 |
| 3..... | | 3 |
| 4..... | | 4 |
| 5..... | | 5 |
| 6..... | | 6 |
| 7..... | | 7 |
| 8..... | | 8 |
| 9 and more..... | | 9 |

NO QUESTION D.13

- D.14. Do you or anyone else in your household own ... ? (READ OUT)
- | | | |
|-------------------------------------------|----|----|
| a colour TV set..... | 64 | 1, |
| a video recorder..... | | 2, |
| a video camera..... | | 3, |
| a radio-clock..... | | 4, |
| a PC/home computer..... | | 5, |
| a still camera..... | | 6, |
| an electric drill..... | | 7, |
| an electric deep fat fryer..... | | 8, |
| 2 or more cars..... | | 9, |
| a second home or a holiday home/flat..... | | 0, |

- D.15. a) What is your current occupation ?
 b) (IF NOT DOING ANY PAID WORK CURRENTLY - CODES 1 TO 4 IN D.15a)
 Did you do any paid work in the past ?
 What was your last occupation ?

	CURRENT OCCUPATION	LAST OCCUPATION
NON-WORKING		
Responsible for ordinary shopping and looking after the home, or without any current occupation, not working	65-66 01	
Student	02	
Unemployed or temporarily not working	03	
Retired or unable to work through illness	04	
SELF EMPLOYED		
Farmer	05	01 67-68
Fisherman	06	02
Professional (lawyer, medical practitioner, accountant, architect, ...)	07	03
Owner of a shop, craftsmen, other self employed person	08	04
Business proprietors, owner (full or partner) of a company	09	05
EMPLOYED		
Employed professional (employed doctor, lawyer, accountant, architect)	10	06
General management, director or top management (managing directors, director general, other director)	11	07
Middle management, other management (department head, junior manager, teacher, technician)	12	08
Employed position, working mainly at a desk	13	09
Employed position, not at a desk but travelling (salesmen, driver, ...)	14	10
Employed position, not at a desk, but in a service job (hospital, restaurant, police, fireman, ...)	15	11
Supervisor	16	12
Skilled manual worker	17	13
Other (unskilled) manual worker, servant	18	14
NEVER DID ANY PAID WORK		15

NO QUESTION D.16 TO D.18

ASK ALL

D.19. Are you ... ?

READ OUT	Yes	No
a) In your household the person mainly responsible for ordinary shopping and looking after the home	69 1	2
b) In your household the person who contributes most to the household income	70 1	2

NO QUESTION D.20

ASK D.21 IF RESPONDENT IS NOT CONTRIBUTING MOST TO THE HOUSEHOLD INCOME : CODE 2 IN D.19b, OTHERS GO TO D.23

- D.21. a) What is the current occupation of the person who contributes most to the household income ?
 b) (IF NOT DOING ANY PAID WORK CURRENTLY - CODE 1 TO 4 IN D.21a)
 Did he/she do any paid work in the past ?
 What was his/her last occupation ?

	Current occupation	Last occupation
NON-WORKING	71-72	
Responsible for ordinary shopping and looking after the home, or without any current occupation, not working	0 1	
Student	0 2	
Unemployed or temporarily not working	0 3	
Retired or unable to work through illness	0 4	
SELF EMPLOYED		73-74
Farmer	0 5	0 1
Fisherman	0 6	0 2
Professional (lawyer, medical practitioner, accountant, architect, ...)	0 7	0 3
Owner of a shop, craftsmen, other self employed person	0 8	0 4
Business proprietors, owner (full or partner) of a company	0 9	0 5
EMPLOYED		
Employed professional (employed doctor, lawyer, accountant, architect)	1 0	0 6
General management, director or top management (managing directors, director general, other director)	1 1	0 7
Middle management, other management (department head, junior manager, teacher, technician)	1 2	0 8
Employed position, working mainly at a desk	1 3	0 9
Employed position, not at a desk but travelling (salesmen, driver, ...)	1 4	1 0
Employed position, not at a desk, but in a service job (hospital, restaurant, police, fireman, ...)	1 5	1 1
Supervisor	1 6	1 2
Skilled manual worker	1 7	1 3
Other unskilled manual worker, servant	1 8	1 4
NEVER DID ANY PAID WORK		1 5

ASK ALL

NO QUESTION D.22

- D.23. If you were asked to choose one of these five names for your social class, which would you say you belong to ? (SHOW CARD 'D.23' - ONE ANSWER ONLY)
- | | |
|-------------------------------|---|
| Middle class..... | 1 |
| Lower middle class..... | 2 |
| Working class..... | 3 |
| Upper class..... | 4 |
| Upper middle class..... | 5 |
| Refuses to be classified..... | 6 |
| Other..... | 7 |
| DK..... | 8 |

NO QUESTION D.24

- D.25. Would you say you live in a ... ? (READ OUT)
- | | | |
|--------------------------------|----|---|
| Rural area or village..... | 76 | 1 |
| Small or middle size town..... | | 2 |
| Large town..... | | 3 |
| DK..... | | 4 |
- D.26. Do you consider yourself as belonging to a particular religion ?
(IF YES) Which one ?
- | | | | |
|---------------------|----|---|-------------|
| Roman catholic..... | 77 | 1 |] GO TO D27 |
| Protestant..... | | 2 | |
| Orthodox..... | | 3 | |
| Jewish..... | | 4 | |
| Muslim..... | | 5 |] GO TO D29 |
| Buddhist..... | | 6 | |
| Hindu..... | | 7 | |
| Other..... | | 8 | |
| None..... | | 9 | |
| DK..... | | 0 | |
- D.27. (TO THOSE WITH CODE 1 TO 4 ON D.26)
Do you attend religious services several times a week, once a week, a few times a year, once a year or less or never ?
(ONE ANSWER ONLY)
- | | | |
|---------------------------|----|---|
| Several times a week..... | 78 | 1 |
| Once a week..... | | 2 |
| A few times a year..... | | 3 |
| Once a year or less..... | | 4 |
| Never..... | | 5 |
| DK..... | | 6 |
- NO QUESTION D.28
- ASK ALL
- D.29. We also need some information about the income of this household to be able to analyse the survey results for different types of households. Here is a list of income groups. (SHOW INCOME CARD 'D.29') Please count the total wages and salaries PER MONTH of all members of this household; all pensions and social insurance benefits; child allowances and any other income like rents, etc ... Of course, your answer as all other replies in this interview will be treated confidentially and referring back to you or your household will be impossible. Please give me the letter of the income group your household falls into before tax and other deductions
- | | | |
|--------------|----|---|
| B..... | 79 | 1 |
| T..... | | 2 |
| P..... | | 3 |
| F..... | | 4 |
| E..... | | 5 |
| H..... | | 6 |
| L..... | | 7 |
| N..... | | 8 |
| R..... | | 9 |
| M..... | | 0 |
| S..... | | X |
| X..... | | Y |
| Refusal..... | 80 | 1 |
| DK..... | | 2 |

P.1 - Date of interview	Day	Month
	-- 11-12	-- 13-14

P.2 - Time of the beginning of the interview	HOUR	MINUTES
USE 24 HOUR CLOCK	__ __ 15-16	__ __ 17-18

P.3 - NUMBER OF MINUTES THE INTERVIEW LASTED	Average
	— — — 19 - 21

P.4 - Number of persons present during the interview		
Two (interviewer and respondent).....	22	1
Three.....		2
Four.....		3
Five or more.....		4
P.5 - Respondent cooperation		
Excellent.....	23	1
Fair.....		2
Average.....		3
Bad.....		4
P.6 - Size of locality		
Less than 2,000 people.....	24	1
2,001 - 20,000 people.....		2
20,001 - 100,000 people.....		3
100,001 people or more.....		4

PUNCHER NOTE:
NO COL. 25

7.8 - POSTAL CODE

[illegible]

P.9 - SAMPLE POINT NUMBER

[illegible]

P.10 - INTERVIEWER NUMBER

								42-49
--	--	--	--	--	--	--	--	-------

2.11 - WEIGHTING FACTOR

								50-57
--	--	--	--	--	--	--	--	-------

P.12. - Telephone available in the household ?

Yes.....	58	1
No.....		2

SHOW CARD 'Q2'

A LOT OF TRUST

SOME TRUST

NOT VERY MUCH TRUST

NO TRUST AT ALL

SHOW CARD 'Q12'

**TO MANY ISSUES ARE DECIDED ON BY THE
EUROPEAN UNION (EUROPEAN COMMUNITY)**

**THE NUMBER OF ISSUES DECIDED ON BY THE
EUROPEAN UNION (EUROPEAN COMMUNITY) AT
PRESENT IS ABOUT RIGHT**

**MORE ISSUES SHOULD BE DECIDED ON BY THE
EUROPEAN UNION (EUROPEAN COMMUNITY)**

I HAVE NOT REALLY THOUGHT ABOUT IT

SHOW CARD 'Q15'

NATURAL LAW PARTY

CONSERVATIVE

PEACE COALITION

ALLIANCE

LABOUR

SDLP

INDEPENDENCE FOR ULSTER

WORKERS PARTY

SINN FEIN

**CONSTITUTIONAL INDEPENDENT -
NORTHERN IRELAND**

ULSTER UNIONIST

DUP

ULSTER INDEPENDENCE MOVEMENT

SHOW CARD 'Q20'

- A) SIR PATRICK MAYHEW**
- B) JACQUES DELORS**
- C) PEREZ DE CUELLAR**
- D) LEON BRITTAN**
- E) IAN PAISLEY**
- F) KENNETH CLARK**
- G) JOHN MAJOR**
- H) DOUGLAS HURD**
- I) HENRY KISSINGER**
- J) BILL CLINTON**

SHOW CARD 'Q25'

DENMARK

SPAIN

POLAND

SWITZERLAND

IRELAND

AUSTRIA

FRANCE

TURKEY

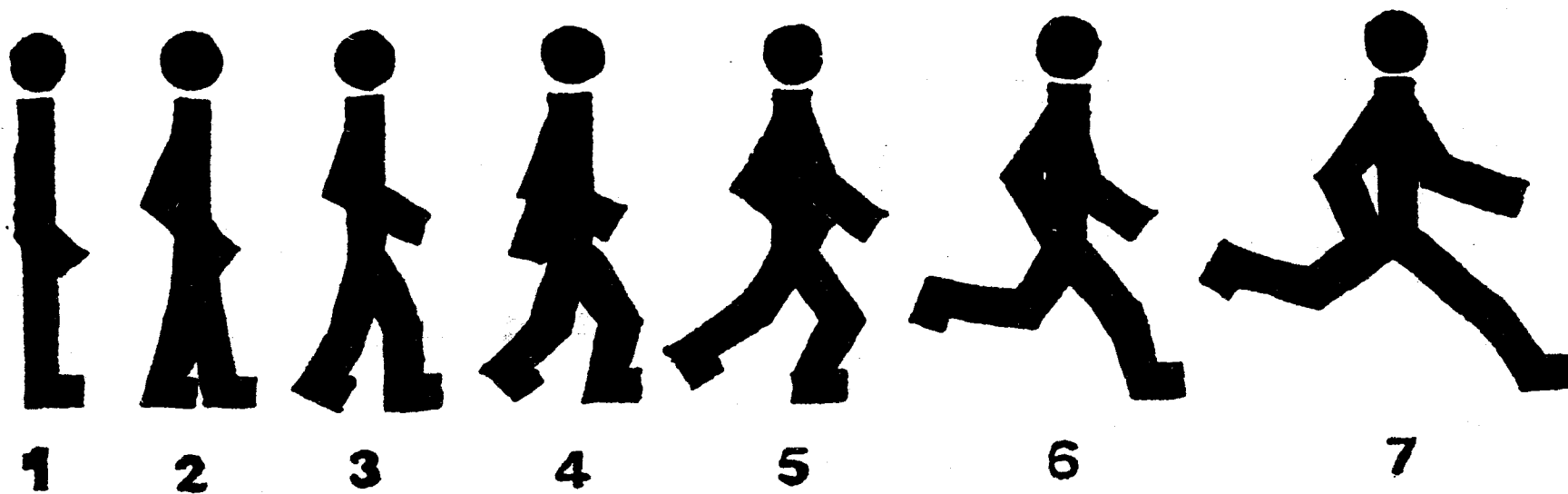
PORTUGAL

HUNGARY

GERMANY

NORWAY

SHOW CARD 'Q26'



SHOW CARD 'Q30'

THE MEDIA

POLITICAL PARTIES

CHURCHES

COMPANIES

EDUCATION

GOVERNMENT

TRADE UNIONS

REGIONS

LOCAL AUTHORITIES (COUNCIL, TOWNHALL)

**INSTITUTIONS OF THE EUROPEAN UNION
(EUROPEAN COMMUNITY)**

SHOW CARD 'Q31'

**Not at all also
European**

1	2	3	4	5	6	7	8	9	10
---	---	---	---	---	---	---	---	---	----

**Very much
also European**

SHOW CARD 'Q33'

Cannot rely on it
at all

1	2	3	4	5	6	7	8	9	10
---	---	---	---	---	---	---	---	---	----

Can rely on it
completely

- a) The European Commission
- b) The government
- c) The European Court of Justice
- d) The Council of Ministers of the European Union (European Community)
representing the national governments
- e) The House of Commons at Westminster
- f) The European Parliament

SHOW CARD 'Q36'

No power at all

1	2	3	4	5	6	7	8	9	10
---	---	---	---	---	---	---	---	---	----

A great deal
of power

- a) The European Parliament
- b) The House of Commons at Westminster

SHOW CARD 'Q37'

No effect at all

1	2	3	4	5	6	7	8	9	10
---	---	---	---	---	---	---	---	---	----

A very big effect

- a) The European Parliament
- b) The House of Commons at Westminster

SHOW CARD 'Q38'

Very bad idea

1	2	3	4	5	6	7	8	9	10
---	---	---	---	---	---	---	---	---	----

Very good
idea

- a) You, yourself
- b) The government

SHOW CARD 'Q40'

I DIDN'T REALLY KNOW WHAT IT WAS ABOUT

**AS THE EUROPEAN PARLIAMENT HAS SO LITTLE
POWER, I DIDN'T THINK IT WAS WORTH THE
EFFORT**

**THE PROBLEMS TALKED ABOUT THE MOST DURING
THE CAMPAIGN WERE NOT THE ONES PEOPLE ARE
REALLY INTERESTED IN**

**THE POLITICAL PARTIES AND CANDIDATES SPOKE
TOO MUCH ABOUT NATIONAL PROBLEMS AND NOT
ENOUGH ABOUT EUROPE**

**YOU COULDN'T TELL ANY MORE WHO WAS FOR OR
AGAINST THE UNIFICATION OF EUROPE**

**WHATEVER IS DONE, THE EUROPEAN UNION
(EUROPEAN COMMUNITY) WILL NEVER WORK**

**THE PARTIES DID NOT PUT FORWARD A
SUFFICIENTLY BALANCED NUMBER OF WOMEN
AND MEN AS CANDIDATES**

**AS A WOMAN, I DIDN'T FEEL REPRESENTED BY THE
CANDIDATES PUT FORWARD**

SHOW CARD 'Q42'

It doesn't matter
at all

1	2	3	4	5	6	7	8	9	10
---	---	---	---	---	---	---	---	---	----

It matters a
great deal

- a) A European election
- b) An election for the House of Commons at Westminster

SHOW CARD 'Q43'

It doesn't matter
at all

1	2	3	4	5	6	7	8	9	10
---	---	---	---	---	---	---	---	---	----

It matters a
great deal

- a) A European election
- b) An election for the House of Commons at Westminster

SHOW CARD 'Q44'

More
Independent
National currency

1	2	3	4	5	6	7	8	9	10
---	---	---	---	---	---	---	---	---	----

New common
European
currency

SHOW CARD 'Q45'

**Launch a massive
employment
programme**

1	2	3	4	5	6	7	8	9	10
---	---	---	---	---	---	---	---	---	----

**Concentrate
on
completion of
Single Market**

SHOW CARD 'Q46'

**Continue to
remove national
border controls**

1	2	3	4	5	6	7	8	9	10
---	---	---	---	---	---	---	---	---	----

**Re-introduce
tighter border
controls**

SHOW CARD 'Q47'

- A) KEEPING TAXES LOW**
- B) FIGHTING UNEMPLOYMENT**
- C) SECURING STABLE PRICES**
- D) REFORMING THE HEALTH SERVICE**
- E) FURTHERING THE POLITICAL UNIFICATION OF WESTERN EUROPE**
- F) SOLVING THE IMMIGRATION PROBLEMS**
- G) ACHIEVING PEACE IN NORTHERN IRELAND**
- H) REDUCING AGRICULTURAL SURPLUSES**
- I) PROTECTING THE ENVIRONMENT**
- J) ENACTING A BILL OF RIGHTS**
- K) FIGHTING CRIME**

SHOW CARD 'Q48A'

ALLIANCE

ULSTER UNIONIST PARTY

DEMOCRATIC UNIONIST PARTY

OTHER UNIONIST PARTY

SINN FEIN

SDLP

THE WORKER'S PARTY

CONSERVATIVE

DEMOCRATIC LEFT

SHOW CARD 'Q49A'

ALLIANCE

ULSTER UNIONIST PARTY

DEMOCRATIC UNIONIST PARTY

OTHER UNIONIST PARTY

SINN FEIN

SDLP

THE WORKER'S PARTY

CONSERVATIVE

DEMOCRATIC LEFT

SHOW CARD 'Q50A'

ALLIANCE

ULSTER UNIONIST PARTY

DEMOCRATIC UNIONIST PARTY

OTHER UNIONIST PARTY

SINN FEIN

SDLP

THE WORKER'S PARTY

CONSERVATIVE

DEMOCRATIC LEFT

SHOW CARD 'Q60'

BELGIUM

DENMARK

GERMANY

GREECE

SPAIN

FRANCE

IRELAND

ITALY

LUXEMBOURG

NETHERLANDS

PORTUGAL

UNITED KINGDOM

SHOW CARD 'D1'

LEFT	1	2	3	4	5	6	7	8	9	10	RIGHT
------	---	---	---	---	---	---	---	---	---	----	-------

SHOW CARD 'D5B'

Not at all
probable

1	2	3	4	5	6	7	8	9	10
---	---	---	---	---	---	---	---	---	----

Very
probable

SHOW CARD 'D23'

MIDDLE CLASS

LOWER MIDDLE CLASS

WORKING CLASS

UPPER CLASS

UPPER MIDDLE CLASS

SHOW CARD 'D29'

**PLEASE USE THIS CARD TO GIVE ME THE CODE
NUMBER FOR: - YOUR TOTAL FAMILY INCOME
FROM ALL SOURCES, BEFORE TAX AND OTHER
DEDUCTIONS**

B LESS THAN £60 PER WEEK	B LESS THAN £240 A MONTH	B LESS THAN £2,880 A YEAR
T £60 - £75	T £240 - £319	T £2,880 - £3,839
P £76 - £90	P £320 - £399	P £3,840 - £4,799
F £91 - £110	F £400 - £479	F £4,800 - £5,759
E £111 - £140	E £480 - £599	E £5,760 - £7,199
H £141 - £170	H £600 - £729	H £7,200 - £8,759
L £171 - £190	L £730 - £829	L £8,760 - £9,959
N £191 - £230	N £830 - £999	N £9,960 - £11,999
R £231 - £265	R £1,000 - £1,149	R £12,000 - £13,799
M £266 - £385	M £1,150 - £1,664	M £13,800 - £19,967
S £386 - £500	S £1,665 - £2,000	S £19,968 - £24,000
K £501 and over	K £2,001 and over	K £24,001 and over